An aerial photograph of a desert landscape, showing a winding river, mountains, and a grid of land parcels. The text is overlaid on the image.

The Sacred and the Beautiful Portraits of Just a Few Northern Arizona Plants

Andrea Hazelton

Springs Stewardship Institute
Museum of Northern Arizona

Arizona Native Plant Society Annual Meeting

6 October 2020

Please allow me to introduce myself...



Verde River, 2008



Rosilda Spring, Kaibab NF, 2020



Tsegi Canyon, 2010



Gray Mountain, 2014



Grand Canyon, 2018

The Sacred and the Beautiful



The Sacred and the Beautiful...

Sacred...

2a Worthy of religions veneration: Holy

2b Entitled to reverence or respect

3b Highly valued and important ₁

Spirituality...

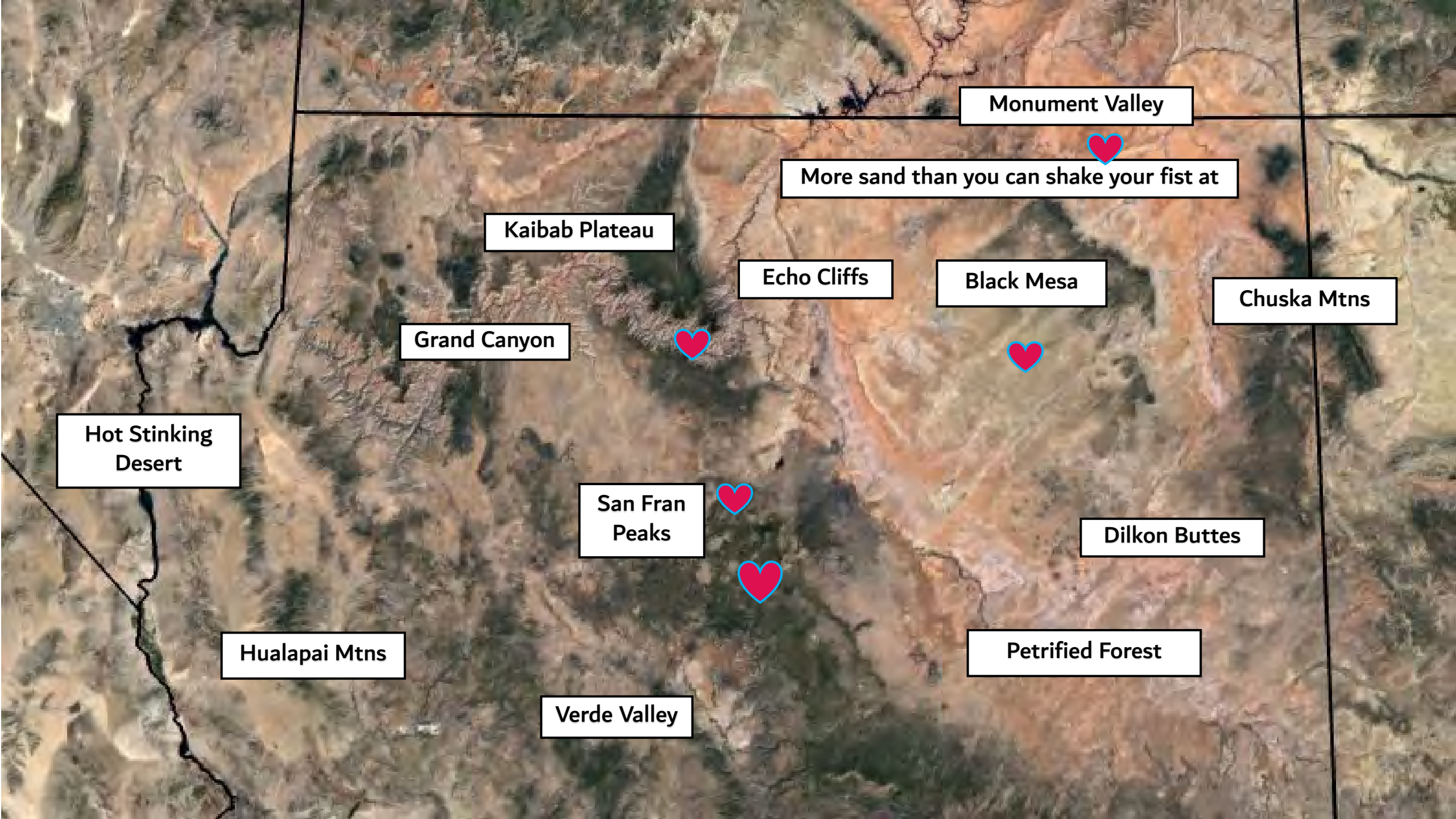
The search for meaning in life...

*consideration of one's relationship with self,
others, nature, and whatever else one
considers to be ultimate* ₂

₁ Merriam-Webster Dictionary

₂ Paraphrased from Wikipedia page on secular spirituality





Monument Valley

More sand than you can shake your fist at

Kaibab Plateau

Echo Cliffs

Black Mesa

Chuska Mtns

Grand Canyon

Hot Stinking
Desert

San Fran
Peaks

Dilkon Buttes

Hualapai Mtns

Verde Valley

Petrified Forest

Flagstaff: Rocky Mountain Bee Plant

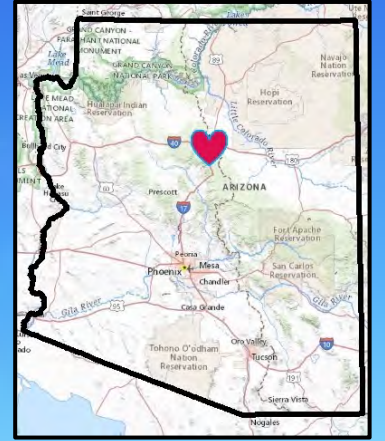


Photo by T. Liggett, Williams-Grand Canyon News

Rocky Mountain Bee Plant

- *Peritoma serrulata*, syn. *Cleome serrulata*
- Navajo: *Waa'*
- Cleomaceae- Related to mustard and caper families.



Photo by Max Licher



Photo by Tony Frates



Photo by Patrick Alexander



Photo by Frankie Coburn

Up in the Peaks: San Francisco Peaks Groundsel



Photo by Max Licher



San Francisco Peaks Groundsel

- *Packera franciscana*
- Asteraceae, the sunflower family
- Protected by Endangered Species Act (Listed Threatened)
- Lives on volcanic talus above timberline
- Off-trail hiking & camping PROHIBITED over 11,400 ft.



Grand Canyon: *Agave phillipsiana*

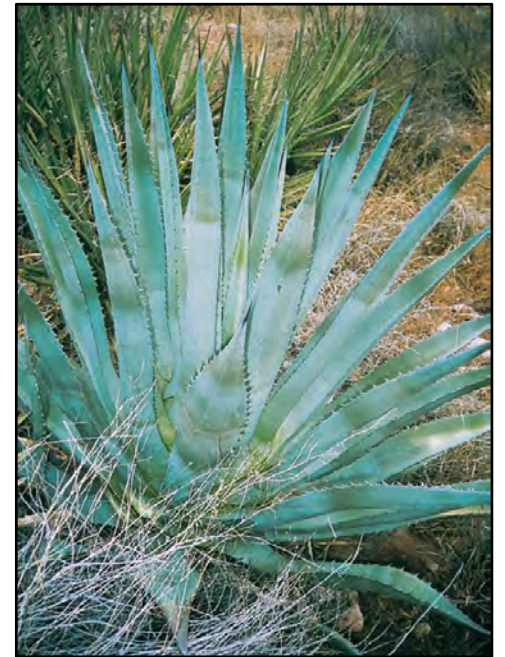
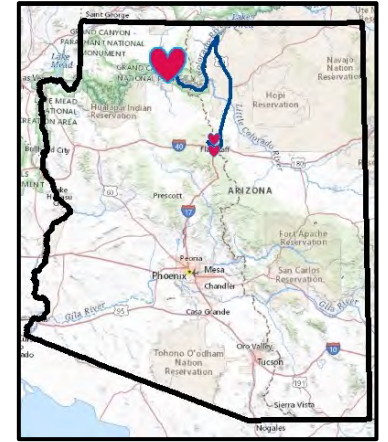


Photo by Wendy Hodgson

Agave phillipsiana

- *The Grand Canyon Century Plant*
- Likely an ancient cultivar
 - Found near archaeological sites
 - Closest relatives are in Mexico



Photo by Max Licher



Photo by Max Licher

The Mesas- Pinyon Pine



The Mesas- Pinyon pine

- *Pinus edulis*
- Navajo: *Chá'ot*
- Small to medium sized tree, up to 30 ft
- Seeds edible, economically important
- Used ceremonially
- On the decline in the Southwest



Photo by Max Licher



Photo by Max Licher



Photo by Patrick Alexander

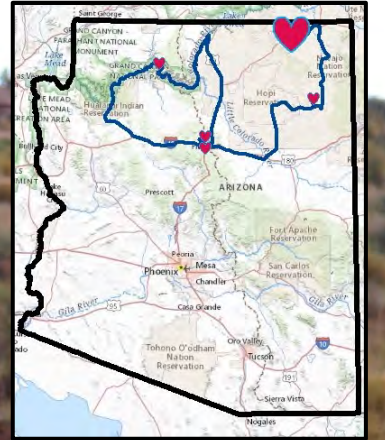


Photo by Patrick Alexander



Photo by Max Licher

Sand Dunes



Sand Dunes- Welsh's Milkweed



Welsh's Milkweed

- *Asclepias welshii*
- Lives on large active dune fields near AZ-UT state line



Questions?

- HUGE thank you to Max Licher, Frankie Coburn, Patrick Alexander, Tony Frates, and everyone else who contributes photos to SEINet!!!!
- Thank you Kirstin Phillips and the Arizona Native Plant Society

